

sf schoolfunds.co.uk



SCHOOL REWARD SCHEME

Providing extra educational equipment through online shopping.

The School Reward Scheme involves all the leading online retailers including; Tesco, Boots, Screwfix, Sainsbury's, M&S, Debenhams, ToysRus, ASDA, Currys, John Lewis, Mothercare and hundreds more.

Schoolfunds is a shopping directory which by simply using the links on the website to select online retailers, reward points are collected for every purchase, which can be exchanged for educational equipment.

Each school chooses its own rewards and there are no restrictions, other than there should be an educational benefit. Schoolfunds have been asked to provide everything from art materials to a new classroom.

extra school equipment only takes a click!
no forms, no passwords, no hidden costs, no catch

Email: info@schoolfunds.co.uk

The schoolfunds scheme

About us

Established in 2003 after a “eureka” moment to help a local PTA, schoolfunds.co.uk has all the leading online retailers involved in the school reward scheme. A simple shopping directory which raises funds for educational equipment from online shopping. The scheme doesn't cost the school anything and doesn't require any maintenance. Everything is maintained for you.

PTA's and schools only need to encourage parents and friends to purchase their online shopping using the retailer links on the schoolfunds website. They don't have to buy anything they wouldn't normally buy and it doesn't cost a penny extra.

The first online fundraising shopping site for schools, schoolfunds.co.uk is still the only fundraising site dedicated to schools and educational establishments, which does not require any login or personal registration.

With schoolfunds only fundraising for schools, there is no conflict with support for charities and other good causes.

Easy to use

With everyone having busy lives the scheme had to be quick and easy to use. With schoolfunds simply select a school on your first visit, which is remembered for future visits and use the links to the retailers to shop as normal.

It only takes 2 clicks to any retailer and best of all, no password to remember. The hardest thing is to remember to use the scheme before shopping.

Added incentive

Schoolfunds relationship with retailers means we receive exclusive discounts and promotion codes, not even available on their own website, which are used to help encourage people to shop using the scheme.

What could be better than saving money on your normal online shopping while your child's education benefits from every purchase?

Safe online shopping

All transactions are made directly with the verified retailer on their secure connection. Schoolfunds only sends the school reference to the retailer, who in turn only advise if a sale to that reference occurred and the order value for the points to be awarded.

The schoolfunds scheme

How many points does a purchase earn?

Each retailer determines the amount of points for a purchase. Most are between 2 and 15 points per pound. The amounts are detailed on the retailers full entry on the A to Z and category pages.

Some retailers have different points for different products and some award an amount of points per sale or policy, in the case of insurances, irrespective of the value. There are even points for registrations, trials and catalogue requests.

How many points could a school expect to raise?

Potentially each family could raise thousands of points based on the findings of Retail Times who's report found the typical annual online spend in the UK is £3,370. Currently with Sainsbury's grocery shopping every online order would raise 100 points or 50p.

What can the points be used for?

Schoolfunds points can be exchanged for almost anything from any supplier, not just with those in the scheme. The reward should however have an educational benefit to the school.

The points collected are displayed on the homepage, having selected the school and have an exchange rate of 200 points to the pound (0.5p each). We have a page in the Information section which has the points value, a reward point calculator and a few school suppliers. Please remember to include VAT and delivery charges in the required points calculation.

How does a school claim a reward?

To redeem the points, all the school needs to do is email us with the details of the items required and the supplier information. We will then order it for delivery directly to the school. We prefer the email request for the reward is sent from the school. If for some reason this is not possible, we can accept other email or telephone requests, but will carry out further security checks. Rewards are only delivered to the school and we will confirm the delivery arrangements with the school usually by telephone for larger items, with a confirmation email to the school prior to the dispatch of the goods.

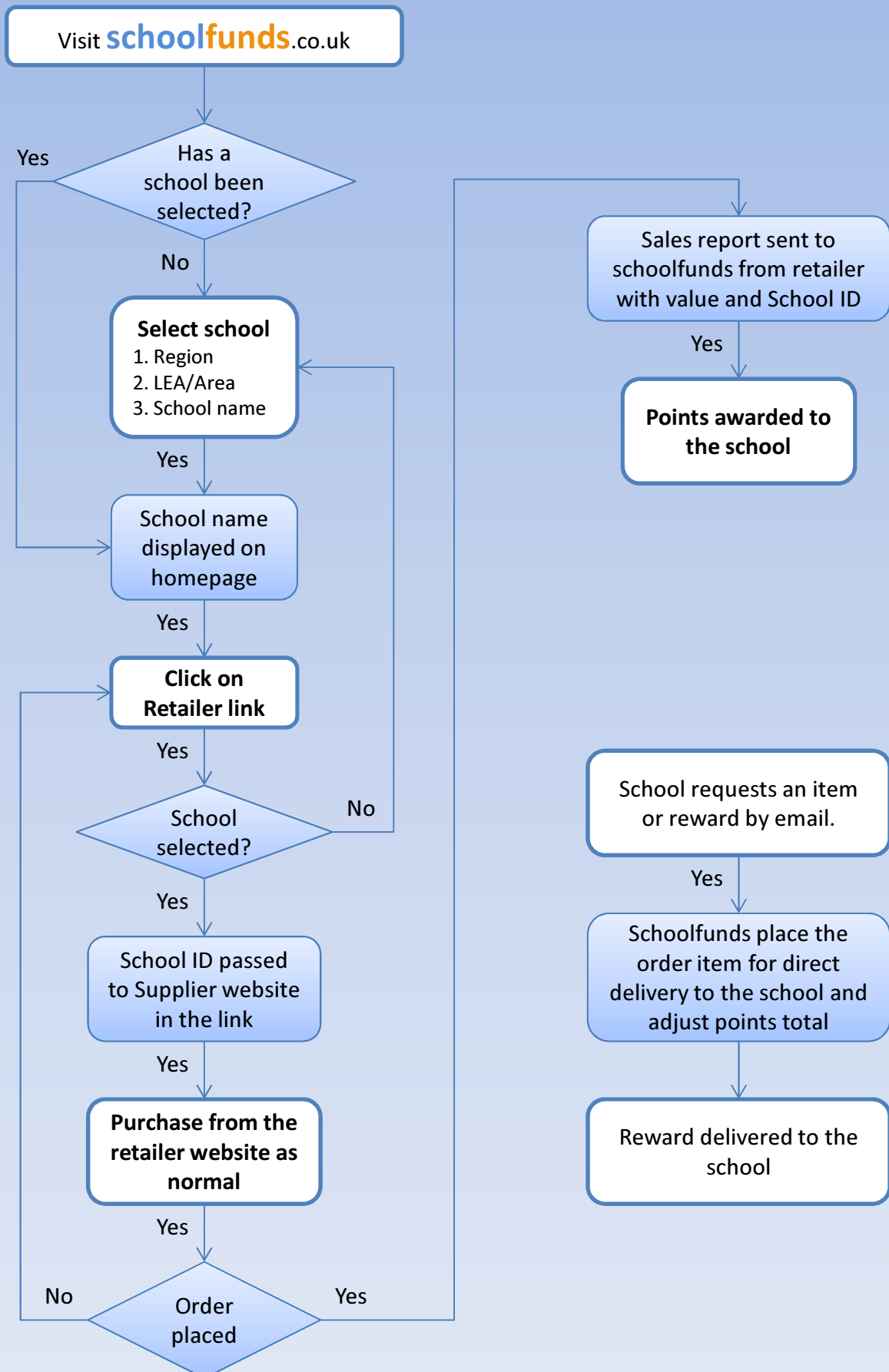
If we are able to find identical items significantly cheaper from an alternative supplier we will always give the school the opportunity to save money/points and accept the lower price.

Contact with the school/PTA

We do almost all administration by email directly with the school as it provides an electronic paper trail, caters for all levels of IT ability and we have found security is less likely to be compromised using this system. We don't use any password systems, as these tend to cause more problems than they solve.

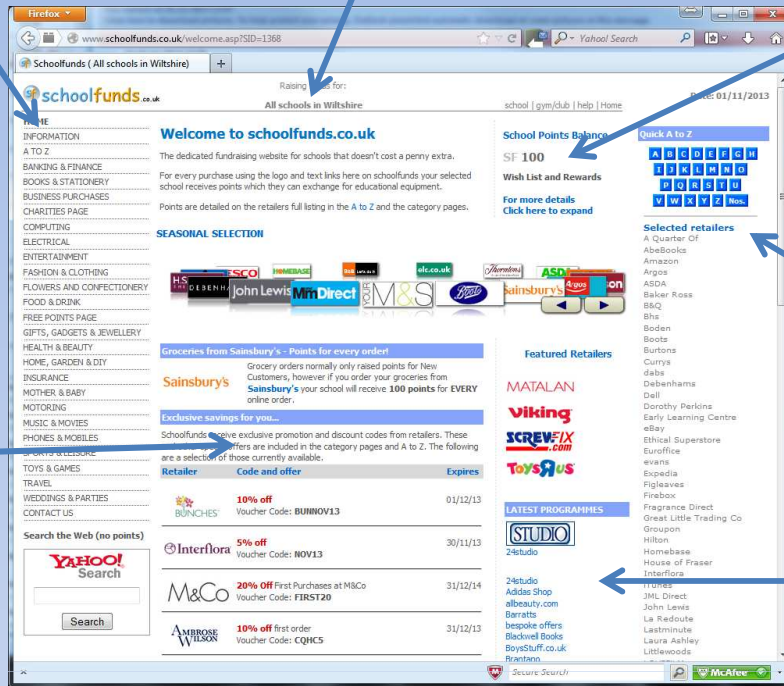
How the scheme works

Schools benefit from every online purchase using schoolfunds.co.uk and it doesn't cost a penny extra.

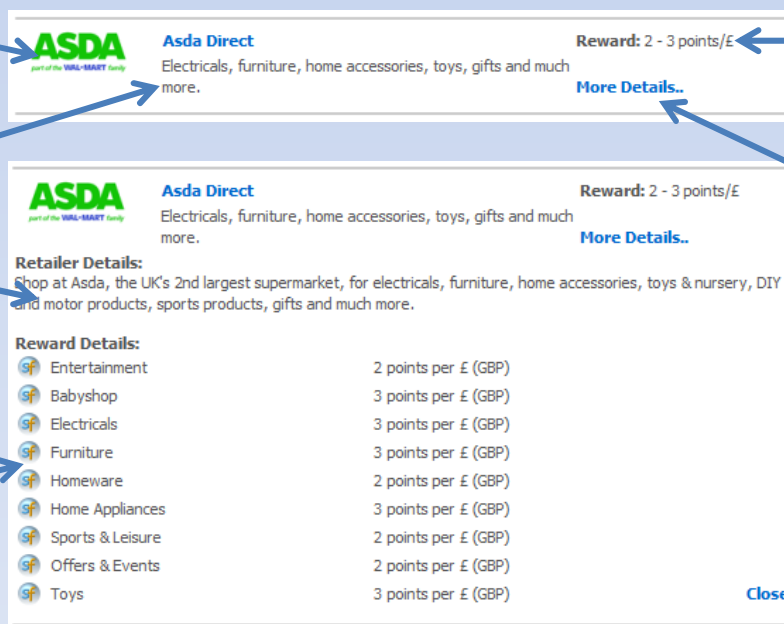


Using the scheme

The Homepage



The Retailer Sections



Selecting a school

The only information needed to use the scheme is the school details.
We do not need any personal information, so have no login, which saves time.

schoolfunds.co.uk Raising funds for: No school is currently selected - [click here](#) to select your school. school | gym/cub | help | Home Date: 01/11/2013

Welcome to schoolfunds.co.uk

The dedicated fundraising website for schools that doesn't cost a penny extra.

For every purchase using the logo and text links here on schoolfunds your selected school receives points which they can exchange for educational equipment.

Points are detailed on the retailers full listing in the A to Z and the category pages.

How to use the schoolfunds scheme

- 1. Select a school** (first time only)
- 2. Select the Retailer**
- 3. Order as normal** (on retailer website)

The only thing you need to do before shopping for the first time is select your school

[Click here to select your school](#)

THAT'S IT - No Login, No Password, No extra costs, No catch!

On your first visit, you will need to select the school by clicking on the link at the top of the page or this button

Select the Region **Selecting your school**

We have over 30,000 Schools on our database which have been organised by Region, LEA and School Name. Simply make your selection from the list, then shop from your chosen retailer using the schoolfunds link to visit their website.

NEW - To support your local school of gymnastics or club - [CLICK HERE!](#)

Select Region

- East
- East Midlands
- London
- North East
- North West
- Northern Ireland
- Offshore
- Overseas
- Scotland
- South East
- South West
- Wales
- West Midlands
- Yorkshire and the Humber

Select Region

Click the area on the map, double click text or select text and click the button to select the Region.

If you have any problem in finding your school, please email us at helpdesk@schoolfunds.co.uk and we will endeavour to resolve the problem and email you back, normally within a few hours.

Now select your Region

We have over 30,000 Schools on our database which have been organised by Region, LEA and School Name.

Select the Area **Select the Area or Local Education Authority**

Any one can support a school, businesses can raise thousands for your school. It costs them nothing and there is no reference to schoolfunds on any correspondence.

Select Area (Local Education Authority)

Selection - South West

- Bath and North East Somerset
- Bedford
- Bournemouth
- Bristol City of
- Cornwall
- Devon
- Dorset
- Gloucestershire
- Isles Of Scilly
- North Somerset
- Plymouth
- Poole
- Somerset
- South Gloucestershire
- Swindon
- Torbay
- Wiltshire

Next

Click the area on the map, double click text or select and click and click the button to select the Area

Select your Area or Local Education Authority

Select your School **Select your School**

Scroll down to find your school. Once selected it will be remembered by your computer for future visits.

If you cannot find your school, please email us at helpdesk@schoolfunds.co.uk and we email you back with the direct link.

Select A School

Selection - South West - Wiltshire

- All schools in Wiltshire
- Abbeylefield School
- Atterbury and West Gimstead Church of England Primary School
- All Cannings Church of England Primary School
- All Saints VA CoE Primary School
- Alberts Primary School
- Amesbury Archer Primary School
- Amesbury Church of England Voluntary Controlled Primary School
- Appleford School
- Ashton Keynes Church of England Primary School
- Avon Valley College
- Avondale Preparatory School
- Raydon St Nicholas Church of England Primary School
- Bellefield Primary and Nursery School
- Bemerton St John Church of England Aided Primary School
- Bishop Wordsworth's Grammar School
- Bishops Cannings Church of England Aided Primary School
- Bishopstrow College
- Bilham Brook Primary School
- Bowshill Primary School
- Box Church of England Primary School
- Bradon Forest School
- Bradon Primary School
- Benkworth Earl Danby's Church of England Primary
- Broad Chalke CoE Primary School
- Broad Hinton Church of England Primary School

Select School

Double click text or select and click the button to confirm the selection of your school.

This will set a cookie in your computer that will remember your selection for future visits. You may change your selection at anytime and as many times as you wish.

Problems finding your school? Don't forget to check under "The" or "St."

If you cannot find your school, please email us at helpdesk@schoolfunds.co.uk and we will add or find your school and email you back with the direct link, normally within 24 hours.

Finally, scroll down the list of schools until you find your school, then click select.

That's it! The school reference (SID) will be remembered on your computer/tablet for future visits.

Now just visit schoolfunds.co.uk before you go shopping.

Problems finding your school?

Don't forget to check under "The" or "St."

If for any reason you cannot easily find your school, please email us at helpdesk@schoolfunds.co.uk and we will email you a direct link to your school, normally within 15 minutes.